

ANTARCTICA - FALKLANDS, SOUTH GEORGIA & ANTARCTICA 20 DAY | HONDIUS



INTRODUCTION

A cruise to the Falkland Islands, South Georgia & the Antarctic Peninsula. Visit some of the most beautiful arrays of wildlife on Earth. This 20 day journey will introduce you to at least 6 species of penguin and a whole lot of Antarctic fur seals! Including photography workshops with Neill Drake and videography workshops with George Kennedy.

ITINERARY

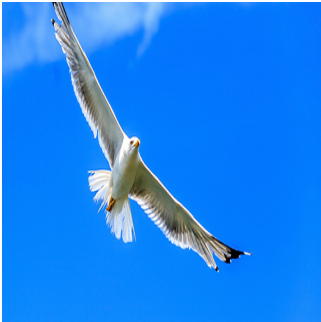
DAY 1: Embarkation in Ushuaia


In the afternoon, we embark in Ushuaia, Tierra del Fuego, Argentina, the southernmost city in the world located at the Beagle Channel and sail through this scenic waterway for the rest of the evening.



DAY 2: At Sea

At sea, in the westerlies the ship is followed by several species of albatrosses, storm petrels, shearwaters and diving petrels.



TRIP CODE
ACOWDST
DEPARTURE
28/01/2026
DURATION
20 Days
LOCATIONS
Antarctic Peninsula, Falkland Islands, South Georgia


ANTARCTICA - FALKLANDS, SOUTH GEORGIA & ANTARCTICA 20 DAY | HONDIUS

DAY 3: Falkland Islands

In the Falkland Islands (Malvinas) we plan to spend the whole day on the fascinating western side of the archipelago. A hike along the Shore of Carcass Island will give us views of Magellanic and Gentoo-Penguins, as well as close encounters with water fowl and Night herons and passerines. On Saunders we will be able to observe four species of breeding penguins (Gentoo, King, Magellanic and Rockhopper), Black-browed Albatrosses and King Cormorants.



DAY 4: Port Stanley

In Stanley, the capital of the Falklands, we can experience Falkland culture, which has some South American characteristics as well as Victorian charm. In Stanley and the surrounding area we can see quite an important number of stranded clippers from a century ago. All passengers are free to wander around on their own. We recommend a visit to the local church and museum (admission fees not included).



DAY 5: At Sea - Day 5 to 6

On our way to South Georgia we will cross the Antarctic Convergence. Entering Antarctic waters, the temperature may drop significantly in the time span of only a few hours. Near the Convergence we will see a multitude of southern seabirds near the ship; several species of Albatrosses, Shearwaters, Petrels, Prions and Skuas.



TRIP CODE

ACOWDST

DEPARTURE

28/01/2026

DURATION

20 Days

LOCATIONS

Antarctic Peninsula, Falkland Islands, South Georgia



ANTARCTICA - FALKLANDS, SOUTH GEORGIA & ANTARCTICA 20 DAY | HONDIUS

DAY 7: South Georgia - Day 7 to 10

In the early afternoon of day 7 we arrive at our first landing site in South Georgia. We might visit the bay of Elsehul, with its very active fur seal breeding beach, and then set course to Right Whale Bay, Salisbury Plain, Godthul, St. Andrews Bay, Gold Harbour, Cooper Bay and Drygalski Fjord to give you a good opportunity to see a wide spectrum of landscapes and wildlife, like the Elephant seals, Fur seals, King and Macaroni Penguins. One of the highlights might be our visit to Prion Island, where we will witness the breeding efforts of the huge Wandering Albatross and enjoy watching their displays (the island is closed for visitors during breeding season from 20 Nov – 07 January). At Fortuna Bay we might try to follow in the footsteps of the great British Explorer Ernest Shackleton and hike over to Stromness Bay. There and at Grytviken we'll see an abandoned whaling village, where King Penguins now walk in the streets and seals have taken over the buildings. At Grytviken we'll also offer a visit to the Whaling History Museum as well as to Shackleton's grave nearby. We will depart from South Georgia in the afternoon of day 10.



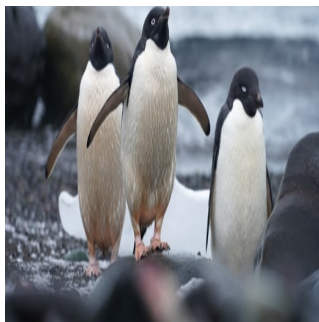
DAY 11: At Sea

Where the ship is again followed by a multitude of seabirds. At some point we might encounter sea-ice, and it is at the ice-edge where we might have a chance to see some high-Antarctic species like the South Polar Skua and Snow Petrel.



DAY 12: South Orkney Islands

We are planning on a visit to Orcadas station, an Argentinean base located on Laurie Island in the South Orkney Island archipelago. The friendly base personnel will show us their facilities and we can enjoy the wonderful views of the surrounding glaciers. Alternatively we may attempt a landing in Shingle Cove on Signy Island.



TRIP CODE

ACOWDST

DEPARTURE

28/01/2026

DURATION

20 Days

LOCATIONS

Antarctic Peninsula, Falkland Islands, South Georgia



ANTARCTICA - FALKLANDS, SOUTH GEORGIA & ANTARCTICA 20 DAY | HONDIUS

DAY 13: At Sea - Day 13 to 14

We will pass large icebergs and have a good chance of Fin whales on the way south. Also we have the best chances on the trip to see Antarctic Petrels around the ship. Depending on conditions, we aim to begin activities the afternoon of day 14.



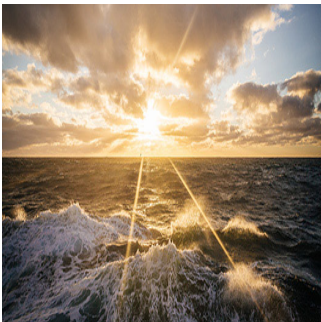
DAY 15: Antarctic Peninsula - Day 15 to 17

If the ice conditions permit, you now sail into the Weddell Sea. Here colossal tabular icebergs herald your arrival to the eastern side of the Antarctic Peninsula. Paulet Island, with its large population of Adélie penguins, is a possible stop. You might also visit Brown Bluff, located in the ice-clogged Antarctic Sound, where you could get the chance to set foot on the Antarctic Continent itself. If conditions aren't favourable to enter the Weddell Sea from the east, the ship will set course for Elephant Island and head into the Bransfield Strait, between the South Shetland Islands and the Antarctic Peninsula. Here you can attempt to access the Antarctic Sound from the northwest. The breathtaking scenery continues in the Bransfield Strait and, if conditions allow further South in the Gerlache Strait. Conditions on the Drake Passage determine the exact time of departure.



DAY 18: At Sea - Day 18 & 19

On our way north we are again followed by a great selection of seabirds while crossing the Drake Passage.



TRIP CODE

ACOWDST

DEPARTURE

28/01/2026

DURATION

20 Days

LOCATIONS

Antarctic Peninsula, Falkland Islands, South Georgia



ANTARCTICA - FALKLANDS, SOUTH GEORGIA & ANTARCTICA 20 DAY | HONDIUS

DAY 20: Disembarkation in Ushuaia

We arrive in the morning in Ushuaia and disembark.



TRIP CODE

ACOWDST

DEPARTURE

28/01/2026

DURATION

20 Days

LOCATIONS

Antarctic Peninsula, Falkland Islands, South Georgia



INCLUSIONS & DETAILS

Accommodation	Cabin On Board Ship
Inclusions	<p>INCLUSIONS</p> <p>Cabin Accommodation on board MV Hondius</p> <p>All meals throughout the voyage aboard the ship including snacks, coffee and tea</p> <p>All shore excursions and activities throughout the voyage by Zodiac</p> <p>Program of lectures by noted naturalists and leadership by experienced expedition staff</p> <p>Free use of rubber boots and snowshoes</p> <p>Group departure transfers in Ushuaia (directly after disembarkation)</p> <p>All miscellaneous service taxes and port charges throughout the programme</p> <p>Comprehensive pre-departure material</p> <p>Access to 1.5 GB of free internet connectivity per person, which resets every 24 hours. Supplementary vouchers available to purchase on onboard. Subject to satellite coverage</p> <p>EXCLUSIONS</p> <p>Airfares to/from disembarkation city</p> <p>Visa & passport fees (if applicable)</p> <p>Travel insurance</p> <p>Beverages (other than tea & coffee)</p> <p>Meals ashore</p> <p>Personal expenses such as laundry & bar</p> <p>Gratuities for the crew (guidelines will be provided)</p> <p>Pre and post land arrangements</p> <p>Government arrival or departure taxes (if applicable)</p> <p>Additional optional activities</p>
Difficulty Rating	2 (Light Adventure)

ANTARCTICA - FALKLANDS, SOUTH GEORGIA & ANTARCTICA 20 DAY | HONDIUS

Single Surcharge	Available upon request. Please contact us for more details. No single supplement will apply if willing to share in selected cabins.
Notes	<p>Prices are based on per person, and may be based on quad/triple/twin share.</p> <p>Prices are correct at time of publishing but are subject to change at any time.</p> <p>Itinerary is subject to change depending on weather and ice conditions.</p> <p>Diving is an optional activity. Experience with cold-water diving and dry-suit dives (at least 30) is a must!</p>
Price Dependent upon	Departure Date, Fuel Surcharges, Cabin Category, Currency Fluctuations, Seasonality & Availability.

SUSTAINABILITY

TRIP CODE
ACOWDST
DEPARTURE
28/01/2026
DURATION
20 Days
LOCATIONS
Antarctic Peninsula, Falkland Islands, South Georgia
